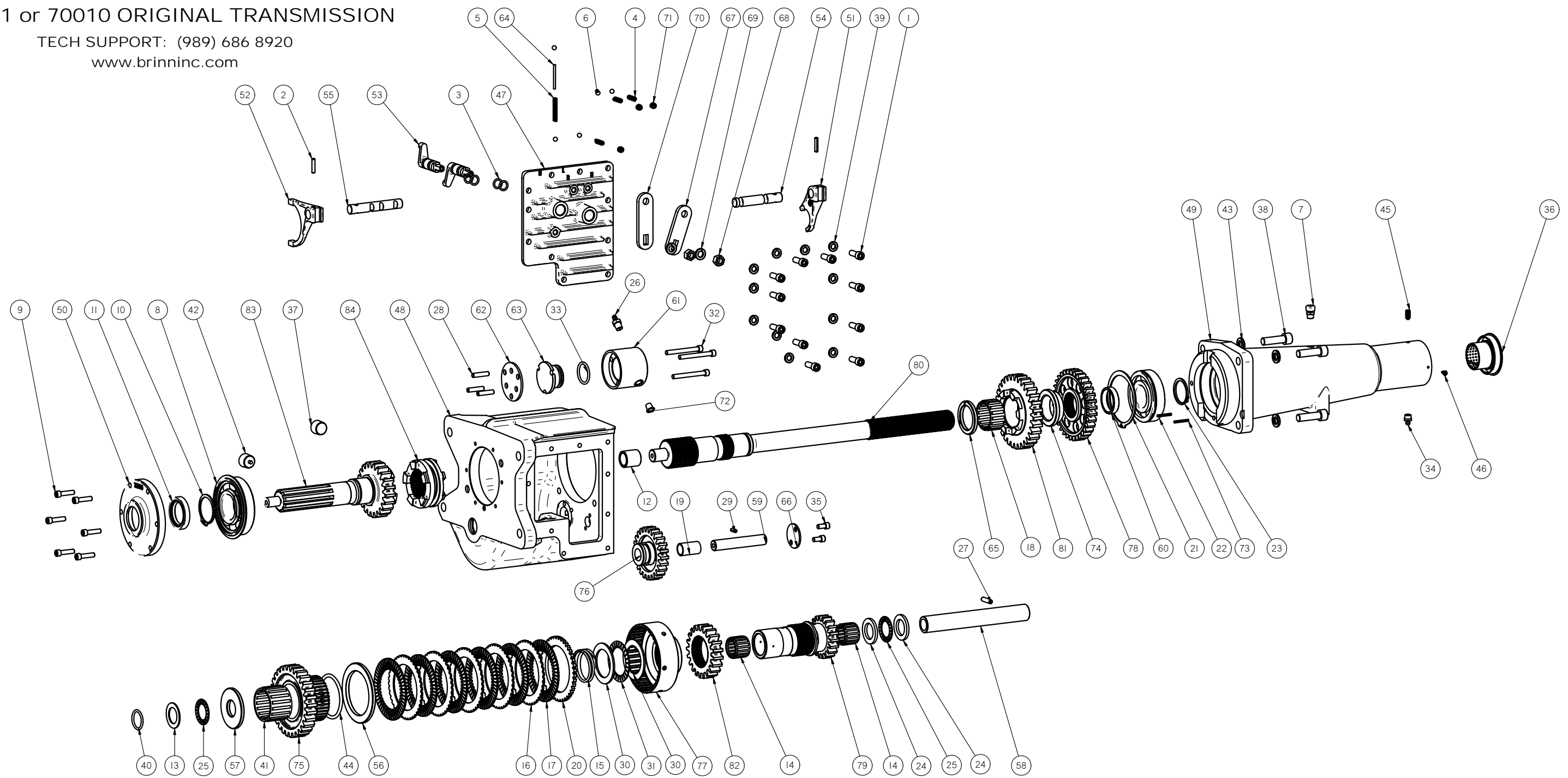




70001 or 70010 ORIGINAL TRANSMISSION

TECH SUPPORT: (989) 686 8920

www.brinninc.com



DETAIL	PART No.	DESCRIPTION	QNTY	DETAIL	PART No.	DESCRIPTION	QNTY	DETAIL	PART No.	DESCRIPTION	QNTY	DETAIL	PART No.	DESCRIPTION	QNTY	DETAIL	PART No.	DESCRIPTION	QNTY
1	71001	5/16-18 X 7/8" SHCS	11	18	71019	CAGE BEARING	1	35	71038	1/4-20 X 1/2" SHCS	2	52	73002	HIGH/LOW SHIFT FORK	1	69	73023	3/8 LOCK WASHER	2
2	71002	ROLL PIN	2	19	71020	BUNTING BEARING	1	36	71040	REAR SEAL & BUSHING KIT	1	53	73003	SHIFT LEVER	2	70	73024	HIGH/LOW LEVER	1
3	71003	O-RING 10.5mm X 3.0	4	20	71021	REAR CLUTCH DISK (1.83 THICK)	1	37	71041	FILL PLUG	1	54	73005	REVERSE SHIFT ROD	1	71	73025	5/16-18 X 5/16 SET SCREW W/ NYLON PATCH	3
4	71004	DETENT SPRING	3	21	71022	RETAINING RING	1	38	71042	7/16-14 X 1 1/2" SHCS	4	55	73006	FIRST/HIGH SHIFT ROD	1	72	73026	PLUG	1
5	71005	LOCKOUT SPRING	1	22	71023	BEARING	1	39	71043	5/16 LOCK WASHER	11	56	73007	FORWARD CLUTCH RING	1	73	73029	1/8 X 1 ROLL PIN	2
6	71006	LOCKOUT DETENT BALL	5	23	71024	RETAINING RING	1	40	71046	O-RING	1	57	73009	THRUST RACE INTERMEDIATE SHAFT	1	74	73031	LOW/REVERSE SPACER	1
7	71007	VENT ASSEMBLY	1	24	71025	THRUST WASHER (1.54-.157 THICK)	2	41	71049	CAGE BEARING	1	58	73010	GUIDE SHAFT	1	75	74002	INPUT MESH GEAR DRIVEN	1
8	71008	BEARING	1	25	71026	NEEDLE THRUST BEARING	2	42	71059	MAGNETIC DRAIN PLUG	1	59	73011	REVERSE IDLER SHAFT	1	76	74004	REVERSE IDLER GEAR	1
9	71009	1/4-20 X 1" SHCS	6	26	71027	BLEEDER ASSEMBLY	1	43	71061	7/16 LOCK WASHER	3	60	73012	OUTPUT SHAFT BEARING SPACER	1	77	74006	CLUTCH HOUSING	1
10	71010	RETAINING RING	1	27	71029	ROLL PIN	1	44	71063	ORING 70 DUROMETER NITRILE	1	61	73013	PISTON CAP	1	78	74007	REVERSE GEAR DRIVEN	1
11	71011	OIL SEAL	1	28	71030	CLUTCH ACTUATOR PIN	3	45	71064	BRASS TIP DOG POINT SET SCREW	1	62	73014	INTERMEDIATE SHAFT RETAINER	1	79	74008	INTERMEDIATE SHAFT	1
12	71012	MACHINED BUSHING	1	29	71031	ROLL PIN	1	46	71065	SET SCREW	2	63	73015	PISTON - CLUTCH PISTON	1	80	74010	OUTPUT SHAFT	1
13	71013	THRUST WASHER (0.60-.063 THICK)	1	30	71032	THRUST WASHER (0.92-.095 THICK)	2	47	72001	COVER SHIFT PLATE	1	64	73016	LOCKOUT DETENT PIN	1	81	74011	FIRST GEAR DRIVEN	1
14	71015	CAGE BEARING	2	31	71033	NEEDLE THRUST BEARING	1	48	72002/72020	MAIN CASE (ALUMINUM / MAG)	1	65	73017	FIRST GEAR SPACER	1	82	74012	FIRST GEAR DRIVING	1
15	71016	CLUTCH RETURN SPRING	1	32	71034	1/4-20 X 2 1/4" SHCS	3	49	72003/72021	OUTPUT HOUSING (ALUMINUM / MAG)	1	66	73020	REVERSE IDLER SHAFT COVER	1	83	74020	INPUT SHAFT	1
16	71017	STEEL CLUTCH PRESSURE DISC	5	33	71035	CLUTCH PISTON O-RING	1	50	72004	FRONT RETAINER	1	67	73021	REVERSE LEVER	1	84	74021	HIGH/LOW DOG RING	1
17	71018	METALLIC FRICTION DISC	6	34	71037	GREASE FITTING 1/8 N.P.T.	1	51	73001	REVERSE SHIFT FORK	1	68	73022	3/8-24 NUT	2				